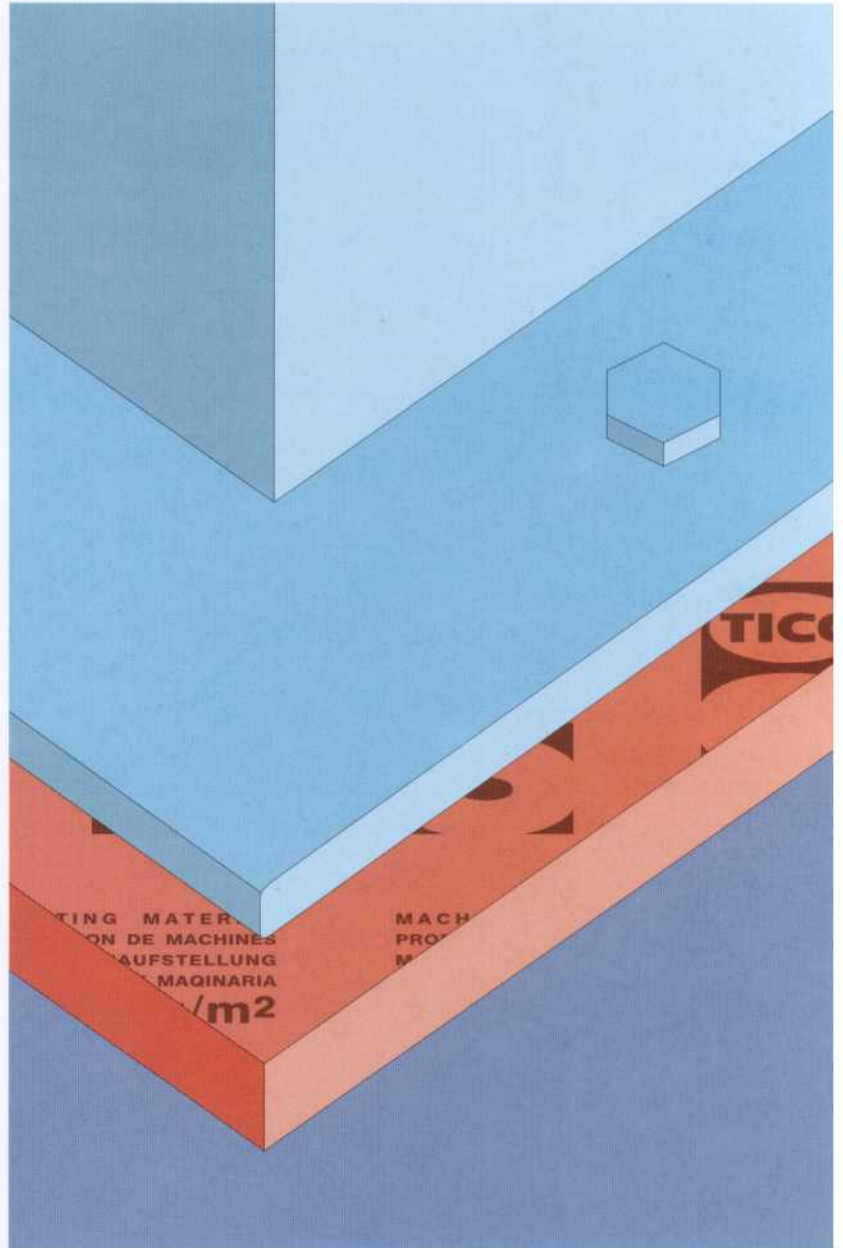




Machinery Mounting Material



Tiflex



When only the best will do

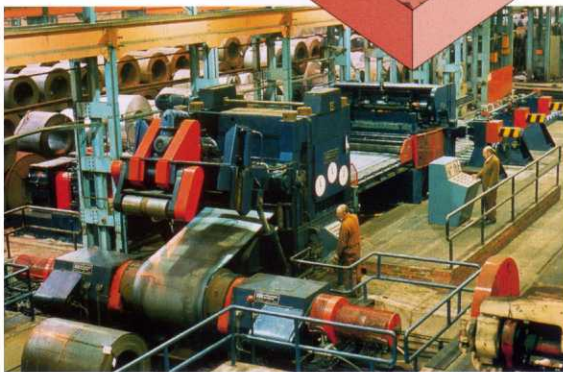


TICO S is a high performance machinery mounting material. It matches today's fast changing manufacturing environment, where ease of machine mounting and flexibility of plant layout are prime factors.

TICO S is manufactured from a blend of carefully selected cork particles and polychloroprene/acrylonitrile elastomers.

Key features of TICO S/PA include:

- Rapid Installation.
- When used in conjunction with TICO Adhesive, virtually eliminates use of anchor bolts and associated floor damage, providing major savings.
- Enables flexibility of machinery layout.
- Helps reduce vibration.
- Retains properties throughout long maintenance free life.
- Operational temperatures between -25°C & +100°C (-13°F & 212°F)
- Can reduce transmitted noise.
- Wide range of standard sheet sizes and thicknesses.
- Maximum static stress 0.35MN/m² (35,000Kg/m²)
- Compatible with all types of machine base.
- Can be supplied cut to size.



TICO - The very best in machinery mounting.



Supply Details

Code	Product	Standard Thickness mm (imperial)		Standard Size mm (imperial)
TICO S	Cork / Elastomer Pad	6 (1/4") 12.5 (1/2") 25 (1")		1200 (4') x 50 (2") 1200 (4') x 75 (3") 1200 (4') x 100 (4") 1200 (4') x 150 (6") 1200 (4') x 600 (2') 1200 (4') x 1200 (4')
TICO A/GE	General Purpose Adhesive	Area Coverage	1.5m ² (16sqft) 15m ² (161sqft)	500ml can (0.132 US Gal) 5 Litre can (1.32 US Gal)

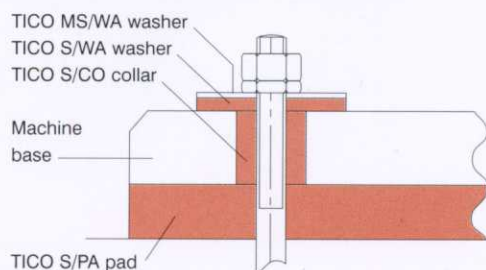
Note: TICO shimming can be supplied to assist in levelling where necessary.

Supporting Products

TICO S/CO	Elastomer Collar	3 (1/8") Wall	M10 (300 (1') long) M12 (300 (1') long) M14 (300 (1') long) M16 (300 (1') long) M18 (300 (1') long) M20 (300 (1') long) M24 (300 (1') long) M26 (300 (1') long)
TICO S/WA	Cork / Elastomer Washer	6 (1/4") (O.D 3 x nominal bolt size)	M10 3/8" M12 7/16" M14 1/2" M16 5/8" M18 11/16" M20 3/4" M24 15/16" M26 1"
TICO MS/WA	Special Plated	3 (1/8")	M10 M12 M14 M16 M18 M20 M24 M26

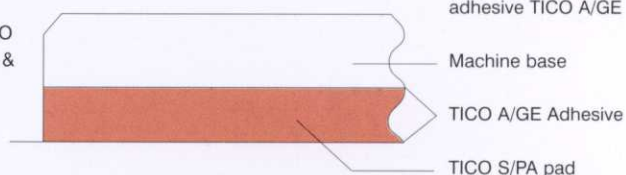
Note: Imperial sizes are nominal

Machinery mounting methods



Floor mounted plant: bolt secured

Location of TICO S/PA pad utilising floor bolts together with TICO S/CO collars and TICO S/WA & MS/WA washers.



Floor mounted plant: adhesive secured

Location of TICO S/PA with adhesive TICO A/GE

Typical Applications

- Lifts, Conveyors, Generators, Refrigerator Plant, Vacuum Pumps, Compressors, etc.
- Machinery with internal out of balance forces e.g. Lathes, Pillar Drills, Shapers, Saws, etc.
- Machinery with vertical shock load, e.g. Power Presses, Slotting Machines, Guillotines, Crushers, etc.

